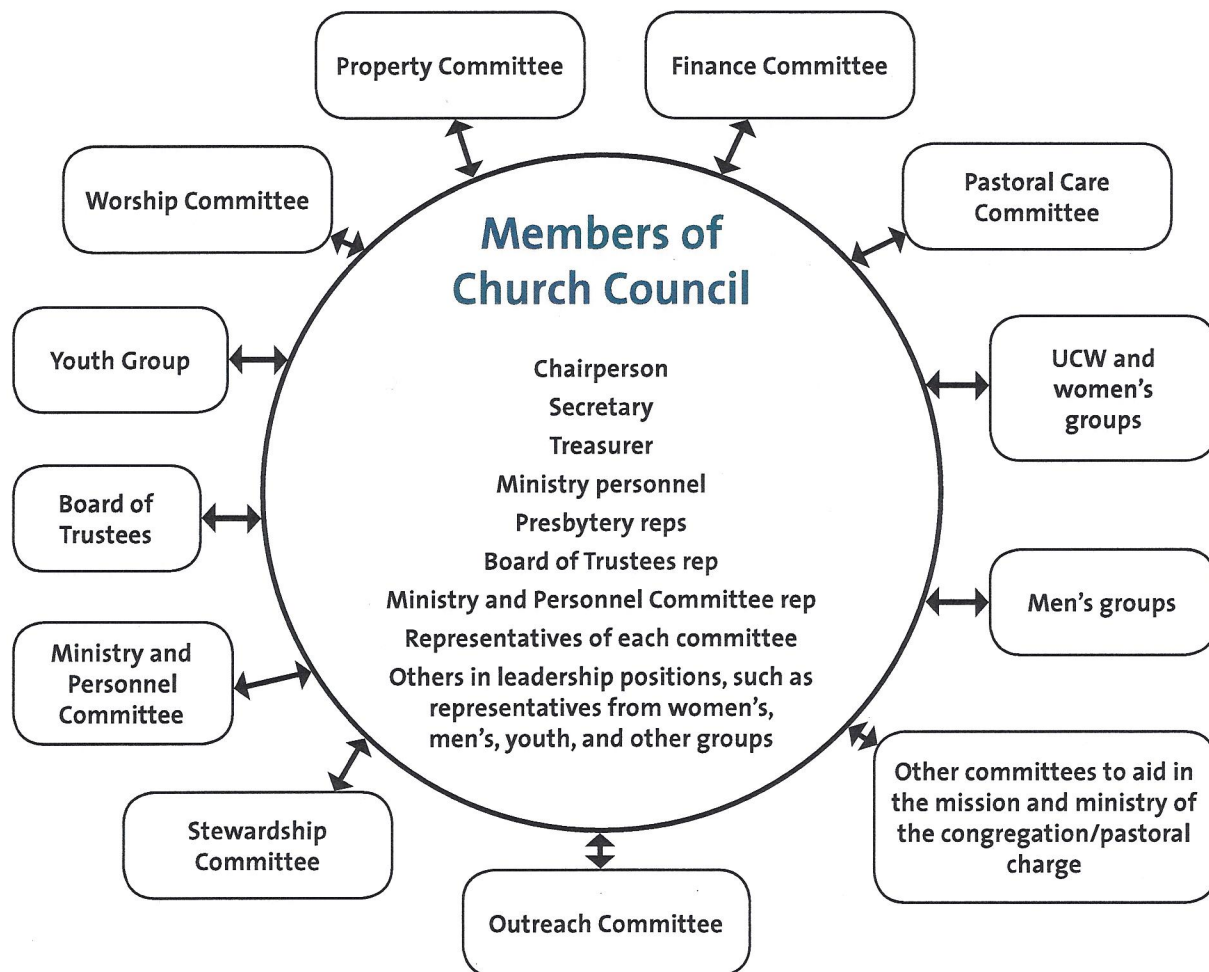


The Church Council Model (*The Manual* 215–228)

The Church Council develops policy and plans that are implemented by various committees and groups of the congregation. The pastoral charge determines the organization and duties of Council committees and elects from among the members and adherents of the pastoral charge people to serve on the committees.

Typical Church Council Model



Council committees elect from their members individuals to represent them on Council. The members of Council are called **elders**.

A **quorum** for the Council requires the attendance of the ministry personnel or, where no minister is settled or appointed, the Pastoral Charge Supervisor.

An **adherent** is a person who is attached to a congregation and contributes regularly to its life and work but is not formally a member of the United Church.